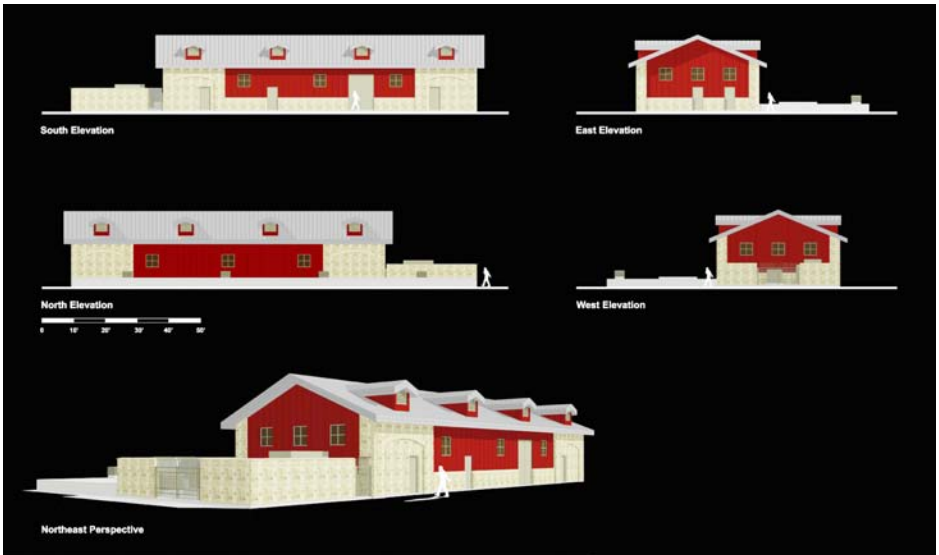


Pumping Stations



As part of the Prairie Waters Project, the city of Aurora will construct three pumping stations. Each of the facilities is strategically placed along the alignment to allow water to be pumped through the next segment of pipeline. The facilities will pump water more than 34 miles from the North Campus near the South Platte River to a water purification facility near the Aurora Reservoir. Changes in elevation along the route to Aurora make the pump stations a vital part of the program by efficiently moving the water through the conveyance pipeline.

- Designs have a rural feel, similar to a barn that might be found in the area.
- Facilities will be approximately two stories, or about 24 feet at the tallest point of the pitched roof.
- Advanced electronics and communication systems allow the facilities to operate from a central control facility miles away, thus requiring minimal staff at each pumping station site.